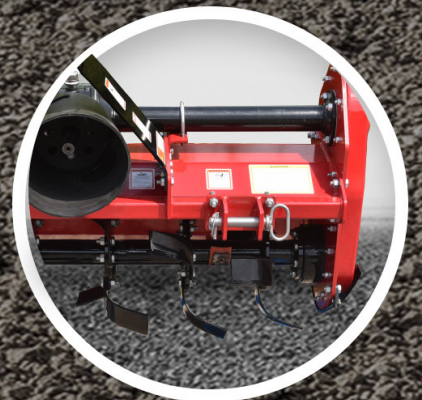


mahindra ^{Rise}

mahindra

Standard Duty

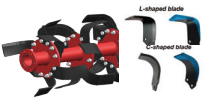
UL Rotavator



Mahindra Standard Duty UL Rotavator is a light series Rotary Tiller specially designed for high performance in light and medium soils under both dry and wet soil conditions. Its light weight and robust design makes it a complete solution for the progressive farmers tilling needs

KEY FEATURES AND ADVANTAGES

Anticlog rotor



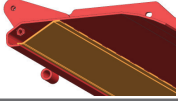
The anti-clog blade rotor can accommodate 2 types of blades, C-shaped & L-shaped, designed for ultimate soil finishing and working crop residue into the ground. Blades are arranged helically around the rotor, resulting in the blades entering the soil progressively and thus reducing power draw. Also helps reduce the clog phenomenon within rotor hull in case of wet soil.

Duo Cone Sealing System



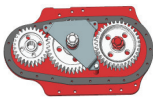
The Duo-Cone sealing system guarantees reliability without the need for maintenance. You can achieve at least 50% longer life from the Duo-Cone system than standard sealing systems in the most demanding working environments. The sealing system is completely waterproof or “amphibious” allowing the rotor and bearing to run in its own oil supply, this allows the rotor to work and be reliable in the dustiest of environments or even work immersed in water and yet the seals will still prevent water and dust ingress into the rotor and hubs.

Anti Clogging System



A rather attractive optional extra is the anti-clogging system: a sheet metal membrane that stops clinging/wet soil from clogging up the machine.

Powerful gearbox



HD Tiller also feature 3-gear powertrain assembly at the side, which ensure constant transmission with no loss of power. The side transmission has been designed in such a way that load surges acting due to tangential forces acting on stub axle shall get distributed on 3 pin topology over the side plates.

Powerful gearbox

248 rpm



To achieve a finer tilth, an extra-powerful gearbox having (11X19) spiral gears are fitted, reaching 248 rpm.

Sturdy Gears & shafts



Spiral bevel deployment in gearbox that drives for high torque and high speed operations. Since being the topology in right angle shaft orientation, also helps in drastic noise reduction. Smooth operation keeps gear drive cool. Thus, minimize need of repairs and maintenance.

Strong Levelling bonnets



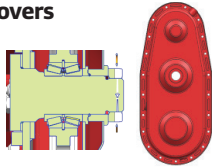
Working on stony ground, the new strong levelling bonnets provide greater wear resistance. Their Z shaped means perfect soil levelling can be achieved in all conditions. They feature spring rods for adjusting height with hand holding unique bracket. Gearbox vibration can further be reduced by opting right combination of turn buckle, unique in segment.

Stable Hitch Pyramid



Working on stony & hard soil ground, the new strong box type hitch pyramid structure provide greater strength. The front and rear plate keeps the hitch pyramid stable and strength factor is increased.

Strong & dust free transmission covers



UM tiller models feature a transmission cover made from CR sheets, which is much stronger than regular grey cast iron. The cover has a chamfer on the inside housing that push in the O-ring inside, providing a much more effective seal to protect gears from dust and water ingress.

TECHNICAL SPECIFICATIONS

	PARAMETERS	UNITS	STANDARD DUTY 4'	STANDARD DUTY 5'	STANDARD DUTY 6'
Tractor	Min/Max Engine	hp	15-25	20-30	25-35
	Min/Max Engine	Kw	11- 19	15-22	19- 26
	PTO Speed	RPM	540	540	540
Dimensions	Overall Length	inch	27.9	27.9	27.9
		mm	710	710	710
	Overall Height	inch	34.8	34.8	37.8
		mm	885	885	885
	Working Width	inch	48	62	72
		mm	1219	1577	1825
	Transport Width	inch	52.8	67	76.8
mm		1345	1703	1951	
Weight	Hood Thickness	Gauge	5	5	5
		lbs	385	452	507
		kg	175	205	230

	PARAMETERS	UNITS	STANDARD DUTY 4'	STANDARD DUTY 5'	STANDARD DUTY 6'
Blades	Type of Blades		C & L	C & L	C & L
	# of Blades		24 / 36	32 / 48	36 / 54
	Blade Length	inch (Height / Width)	6.9 / 4.25	6.9 / 4.25	6.9 / 4.25
		mm (Height / Width)	174 / 108	174 / 108	174 / 108
	Number of Flanges		6	8	9
Rotor	Drive Type		Gear	Gear	Gear
	Rotor Size	inch	16.61	16.61	16.61
		mm	422	422	422
	Rotor Speeds	rpm	244	244	244
	(Min/Max) Working Depth - Blade Tip to depth skid shoe	inch	2.6	2.6	2.6
		mm	65	65	65
(Min/Max) Working Depth - Blade Tip to Rotor tube periphery	inch	6.9	6.9	6.9	
	mm	175	175	175	
Hitching	PTO Category		PTO CAT 1 (OD 1.38")	PTO CAT 1 (OD 1.38")	PTO CAT 1 (OD 1.38")
	Hook Up Type		3 Point Mounted	3 Point Mounted	3 Point Mounted
	Hitch Category		1	1	1
	Quick Hitch Compatible				
	(QH Must Meet ASABE Specifications)		Yes (CAT I)	Yes (CAT I)	Yes (CAT I)
Features	Parking Stand		Yes	Yes	Yes
	Driveline Protection		Slip Clutch	Slip Clutch	Slip Clutch
	Depth Control		Side Skid Shoes	Side Skid Shoes	Side Skid Shoes
	Limited Gearbox Warranty		5 Years	5 Years	5 Years

Note: Since product improvement is a continuous process, specifications and details provided are subject to change without prior information.

Dealer's / Distributor's stamp

Address

Mahindra & Mahindra Ltd. Farm Equipment Sector, Farm Division AFS Headquarters, Mahindra Tower, 1st Floor, Akurli Road, Kandivali (E), Mumbai-400101, India