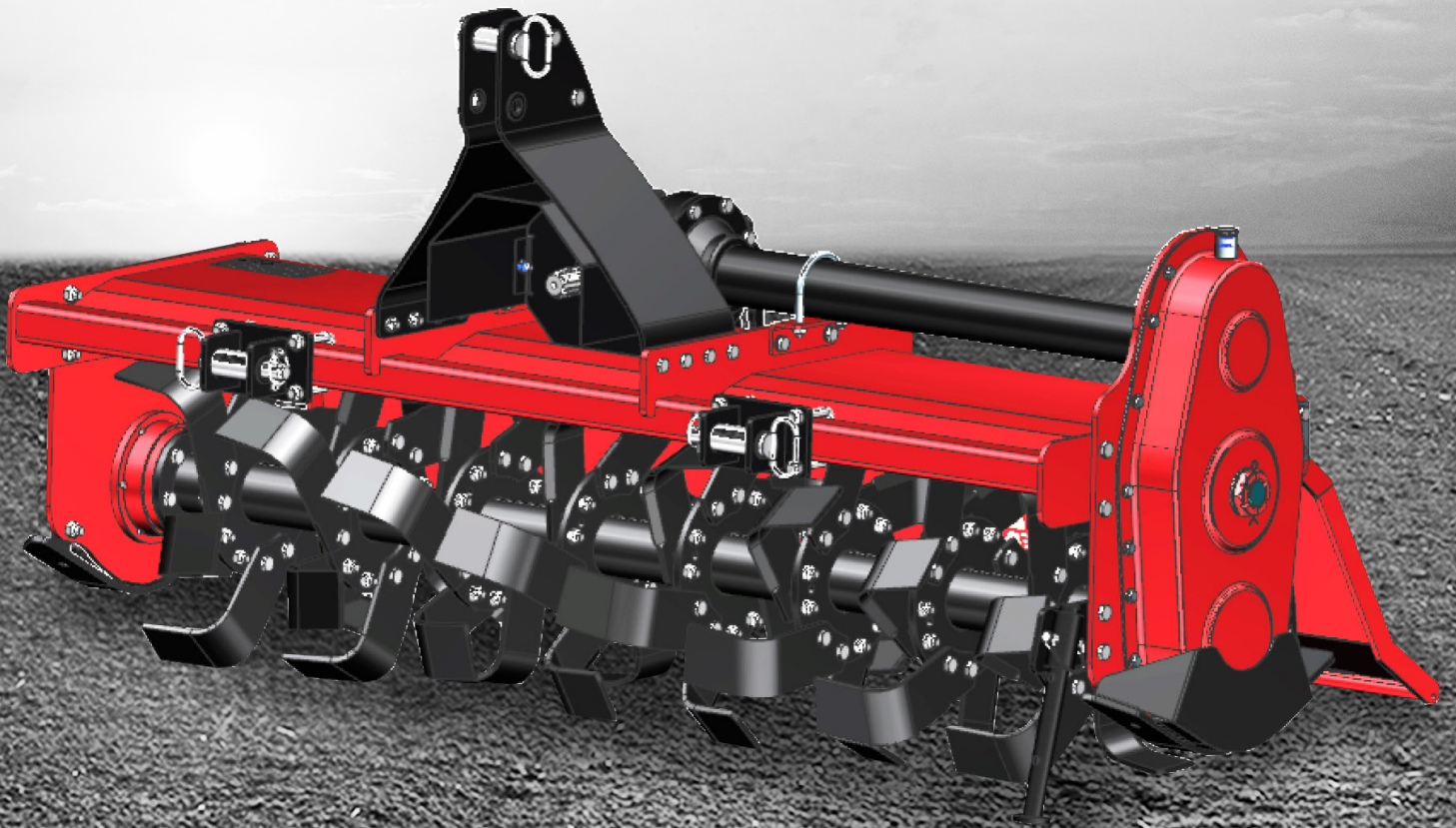


mahindra *Rise*

mahindra
Medium Duty UM
Rotavator



Mahindra Medium Duty UM Rotavator is a lightweight series Rotary Tiller specially designed for high performance in medium soils under both dry and wet soil conditions. Its lightweight and robust design makes it a complete solution for progressive farmers tilling needs.

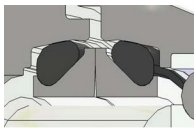
Features and Benefits

Helix Spiral configuration rotor



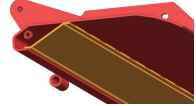
The helix spiral blade configuration rotor can accommodate 2 types of blades, C-shaped and L-shaped, designed for ultimate soil finishing and working crop residue into the ground. Blades are arranged helically around the rotor, resulting in the blades entering the soil progressively and thus reducing power draw. Also helps achieve finer tilth of soil. Specially designed for high performance in light and medium soils in both dry and wet soil conditions such as puddling.

Duo Cone Sealing System



The Duo-Cone sealing system guarantees reliability without the need for maintenance. You can achieve at least 50% longer life from the Duo-Cone system than standard sealing systems in the most demanding working environments. The sealing system is completely waterproof or "amphibious" allowing the rotor and bearing to run in its own oil supply, this allows the rotor to work and be reliable in the dustiest of environments or even work immersed in water and yet the seals will still prevent water and dust ingress into the rotor and hubs.

Anti Clogging System



A rather attractive optional extra is the anti-clogging system: a sheet metal membrane that stops clinging/wet soil from clogging up the machine.

Powerful Side gear Train



MD Tiller also feature 3-gear powertrain assembly at the side, which ensure constant transmission with no loss of power. The side transmission has been designed in such a way that load surges acting due to tangential forces acting on stub axle shall get distributed on 3 pin topology over the side plates.

Optimum rotor rpms



To achieve a finer tilth, an extra-powerful gearbox having (13X25) bevel gears are fitted, reaching 238 rpm.

Sturdy Gears and shafts



Straight Bevel deployment in gearbox that drives for high torque and high speed operations. Since being the topology in right angle shaft orientation, also helps in drastic noise reduction. Smooth operation keeps gear drive cool. Thus, minimize need of repairs and maintenance.

**Spring Adjustable
Levelling
bonnets**



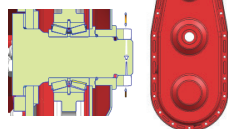
Working at field operations, new handle design of spring adjuster rod ensure soil levelling and easy to adjust.

**Stable
Hitch
Pyramid**



Working on light & medium soil ground, the new strong top mast hitch pyramid structure provide greater strength. This is designed to have quick hitch adaptability.

**Strong and dust
free transmission
covers**



UM tiller models feature a transmission cover made from CR sheets, which is much stronger than regular grey cast iron. The cover has a chamfer on the inside housing that push in the O-ring inside, providing a much more effective seal to protect gears from dust and water ingress.

TECHNICAL SPECIFICATIONS

Parameters		Medium Duty 5'	Medium Duty 6'
Gearbox Type	SS / MS	SS	SS
Gearbox Bevel Pair	Pinion / Module	13 / 6.25	13 / 6.25
	Crown / Module	25 / 6.25	25 / 6.25
Gearbox Spur Set (Available)	For Bangladesh	Not Applicable	Not Applicable
	For Domestic	Not Applicable	Not Applicable
Side Gear Train	Top Gear / Module	23 / 6	23 / 6
	Idler Gear / Module	35 / 6	35 / 6
	Bottom Gear / Module	27 & 6	27 & 6
Centre Distance (Total) - (mm)		366 (Str. Config.)	366 (Str. Config.)
Distance (Tran. Housing axis to frame sheet)		100.5	100.5
Drive end side bearing configuration		Bearing 6309	Bearing 6309
Dead end side bearing configuration		Bearing 6209	Bearing 6209
Idler bearing configuration		Bearing 32008	Bearing 32008
Idler pin support type	Simply supported / Cantilever	Simply supported	Simply supported

Parameters		Medium Duty 5'	Medium Duty 6'
Drive end side plate thickness (mm)		8	8
Dead end side plate thickness (mm)		8	8
Main frame sheet thickness (mm)		4	4
Main Frame Front Pipe		49.5*49.5*4.5	49.5*49.5*4.5
Frame Stacking Plates thickness (mm)		8	8
Trailing board sheet thickness (mm)		2	2
Blade type construction	C Type / L Type	C & L Type Both (Available)	C & L Type Both (Available)
Rotor shaft configuration	Outward orientation / Inward orientation	Outwards Orientation	Outwards Orientation
Rotor swing Diameter (mm)		452 (L Type)	452 (L Type)
		462 (C Type)	462 (C Type)
Rotor tube configuration		76.2 X 65	76.2 X 65
Rotor shaft speed (rpm)		239	239
Overall Dimensions (mm)		1810*950*795	2000*950*795
Tilling width (mm)		1640	1830
Recommended Tractor hp / kW range			
Number of flanges on rotor shaft		8	9
Rotor Flange Diameter		208	208
Rotor Flange Thickness		10	10
Number of blades on rotor shaft		48	54
Number of blades per flange		6 Blades	6 Blades
Blade Overlapping (mm)		16	16
PTO input speed		540	540
Transmission type		Gear	Gear
Gap b/w frame sheet and rotor hull		35 (L Type)	35 (L Type)
		30 (C Type)	30 (C Type)
Interchangeability of L & C Blade on same rotor		Yes	Yes
Frame construction type		Anti-clogging Type	Anti-clogging Type
Trailing board construction type		Z Type	Z Type
Three point linkage type		CAT I & QUICK HITCH	CAT I & QUICK HITCH
Weight (kg)		290 (Approx.)	315 (Approx.)
Sealing Type (Stub axle arrangements)	Multilip seal / Duo cone mechanical face seal	Duo-Cone Seal	uo-Cone Seal
Hitch Plate Thickness (mm)		6	6
Maximum Depth (cm)		18	18

Dealer's / Distributor's stamp

Address

Mahindra & Mahindra Ltd. Farm Equipment Sector, Farm Division AFS Headquarters, Mahindra Tower, 1st Floor, Akurli Road, Kandivali (E), Mumbai-400101, India